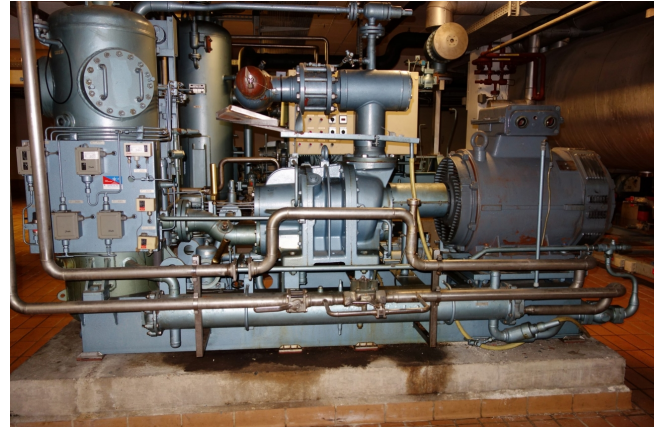


# Grasso P-1

## Specifications

Hersteller	Grasso
Typ	P-1
Kältemittel	NH 3 (ammonia)
kW at 0°C/+40°C	772*
kW at -30°C/+40°C	201*
kW at -40°C/+40°C	201*
E-Motor Specs	160
Anlaufentlastung	✓
Leistungsregelung	✓
Auf einem Stahlramen	✓
Druckschalter	✓
Ölabscheider	✓
Schaltschrank	✓
Bemerkungen	y.o.b. 1995 // Rebuild 2008 // Electromotor: 160 kW at 2975 RPM // *772 kW based on 0°C/+35°C // *201 kW based on -35°C/+35°C
Stock	1



## Description

### Used Grasso P-1

y.o.b. 1995 // Rebuild 2008 // GEA Grasso Screw Compressor Package PB-1A // Including Water cooled oil cooler

